

## PERICARDIUM

1.0 CM X 1.0 CM PERISM \$110

1.5 CM X 2.0 CM PERIMD \$125

2.0 CM X 3.0 CM PERILG \$175



Pericardium membrane is a natural allograft material that comes from the tissue surrounding the heart. Pericardium provides a long lasting barrier when optimum strength and handling for graft containment are necessary. It acts as a guide in the healing of bone and surrounding tissue.

Pericardium functions as a thin pliable membrane that will lay flat on the grafting site. It is an outstanding choice in cases such as Block Allograft coverage and large Ridge Augmentation procedures, where adaptability to surface contours is essential.

Resorption time, 4-6 months - hydrate with saline prior to use - room temperature storage.

## DERMIS /DERMAL ALLOGRAFT

DERMAL ALLOGRAFT 1.0 CM X 1.0 CM \$45

DERMAL ALLOGRAFT 1.0 CM X 4.0 CM \$100



Dermal Matrix Allograft is a natural alternative to autogenous soft tissue grafts. It can be used for both horizontal and vertical soft tissue augmentation, to increase volume and provide a highly cosmetic clinical result. Dermis exhibits superb soft tissue response and maturation, ideal for aesthetic case requirements.

A natural biological matrix designed for successful soft tissue enhancement, periodontal/peri-implant soft tissue management, and Guided Tissue Regeneration procedures.

Provides an excellent healing environment and acts as a guide for the regeneration of vital soft tissue. Resorption time, 4-6 months - hydrate with saline prior to use - room temperature storage.

## PTFE MEMBRANE

**\$65**

PTFE



The PTFE Membrane is used to prevent both water and oil carry-over giving further protection to analysers.

They are most commonly used in sample systems to protect expensive and sensitive analytical equipment. Because they are hydrophobic water is repelled from the surface and pores of the membrane and cannot pass through.



## FLEXO PLATES & MEMBRANES



Osteolife Biomedical has added its inventory flexible and bendable, partially decalcified bone sheet and is adopted for use during in vivo repair, replacement or reformation of the skeletal system. The allografts comprise sheets of partially decalcified natural bone with a thickness having sufficient flexibility to allow the sheet to be shaped to conform to configuration of the portion of the skeleton to be repaired. These allografts have sufficient strength to allow the sheet to be so shaped without damage to the sheet.

The bone matrix is ultimately resorbed by the body thereby eliminating the need for surgical removal of the matrix as is often necessary when exogenous membrane material is used.

It has been shown that partially or completely decalcified bone matrix can be sectioned into thin sheets (flexo-plates) or membranes (flexo-membranes) and that such preparations can be utilized for repairing or regenerating bone. The material is prepared in two thicknesses. Flexo-plates are 0.75 to 1.0mm thick. Flexo-membranes are .50mm or less thick.

### ADVANTAGES

- Biocompatible
- Non-inflammatory
- Capable of inducing osteogenesis
- Resorbed by the body and replaced with natural bone
- Posses tensile strength
- Partially decalcified perfoated bone
- Implanted without being affixed to the underlying bone

Because integration and replacement of allograft bone sheets is desirable, perforations in the same are extremely important. These serve as sites of vascular ingrowth and ossification.

The unique methods or preparation and use of flexo-plates and flexo-membranes are covered by US Patents 8,888,823 and 9,101, 424.

Flexo-plates are prepared in three sizes, 15x20 mm, 15x25 mm and 15x30 mm, Flexo-membranes are prepared in seven sizes, in .50mm increments from 20 x 20mm to 35x35mm.

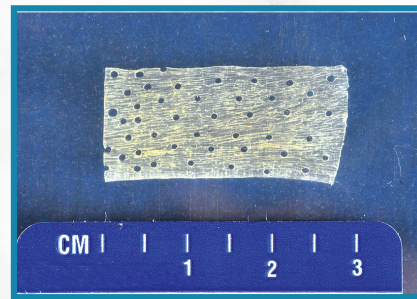
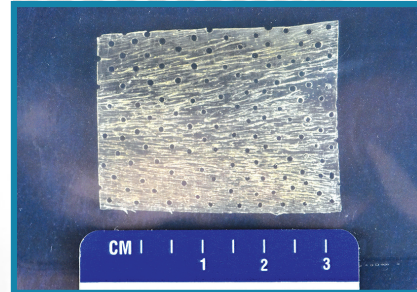
#### FPFM

#### Flexo Membranes

20 x 20 - \$75  
20 x 25 - \$100  
25 x 25 - \$125  
25 x 30 - \$150  
30 x 30 - \$175  
30 x 35 - \$200  
35 x 35 - \$225

#### Flexo Plates

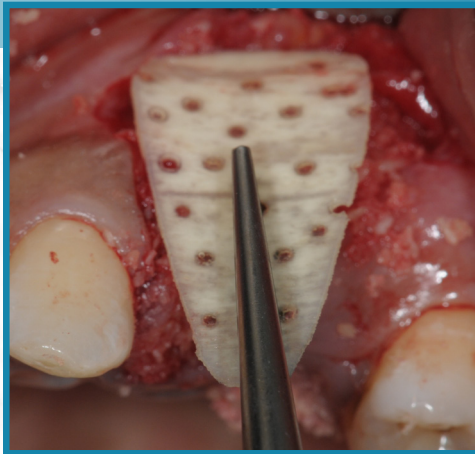
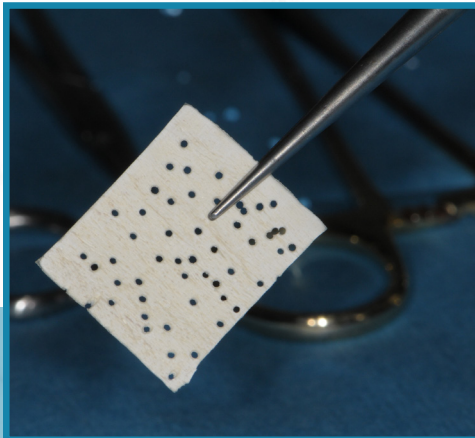
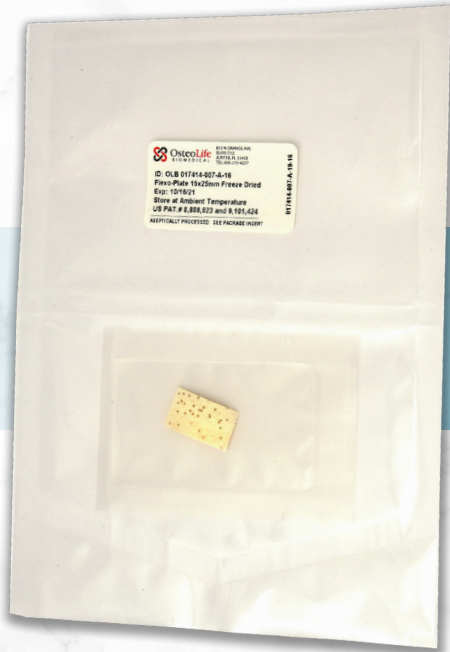
15 x 20 - \$110  
15 x 25 - \$125  
15 x 30 - \$175



### USES

- Used in maxillary sinus augmentation elevation
- Repair of oro-nasal fistulas
- Alveolar augmentation
- Guided tissue regeneration in periodontal disease
- Augmentation and reconstruction of facial and other skeletal structures.

## FLEXO PLATES & MEMBRANES CONTINUED



# OSTEOLIFE

